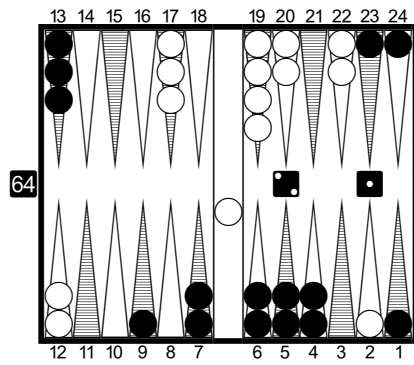


Problem 1



XGID=aAa-BBBB-A--bC---c-db-bAA-:0:0:1:21:0:0:3:0:10

● to play 21

○ is Player 2

score: 0
pip: 138

Unlimited Game
Jacoby Beaver

pip: 140
score: 0

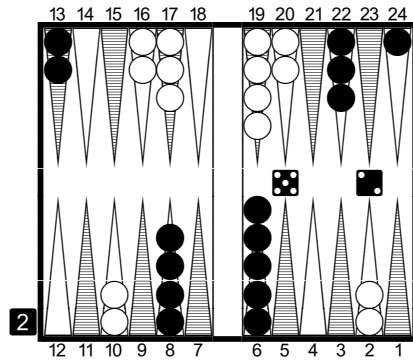
● is Player 1

| | | | |
|----|----------------------|---------------------------|---|
| 1. | Rollout ¹ | 24/23 13/11 | eq: +0.127 |
| | Player: | 52.69% (G:19.31% B:0.76%) | Conf.: ± 0.015 (+0.112...+0.142) - [100.0%] |
| | Opponent: | 47.31% (G:16.44% B:1.02%) | Duration: 1 minute 36 seconds |
| 2. | Rollout ¹ | 9/6 | eq: +0.041 (-0.086) |
| | Player: | 50.88% (G:19.94% B:0.72%) | Conf.: ± 0.015 (+0.027...+0.056) - [0.0%] |
| | Opponent: | 49.12% (G:19.07% B:0.99%) | Duration: 1 minute 37 seconds |
| 3. | Rollout ¹ | 24/23 9/7 | eq: +0.030 (-0.097) |
| | Player: | 50.05% (G:18.34% B:0.61%) | Conf.: ± 0.015 (+0.015...+0.045) - [0.0%] |
| | Opponent: | 49.95% (G:16.15% B:0.82%) | Duration: 1 minute 35 seconds |
| 4. | Rollout ¹ | 24/21 | eq: +0.028 (-0.099) |
| | Player: | 51.46% (G:18.01% B:0.69%) | Conf.: ± 0.014 (+0.014...+0.042) - [0.0%] |
| | Opponent: | 48.54% (G:19.94% B:1.37%) | Duration: 1 minute 35 seconds |
| 5. | Rollout ¹ | 4/2* 2/1 | eq: +0.028 (-0.099) |
| | Player: | 48.83% (G:23.81% B:0.40%) | Conf.: ± 0.017 (+0.011...+0.045) - [0.0%] |
| | Opponent: | 51.17% (G:20.44% B:1.74%) | Duration: 1 minute 19 seconds |
| 6. | Rollout ¹ | 13/11 9/8 | eq: -0.035 (-0.162) |
| | Player: | 50.89% (G:18.41% B:0.75%) | Conf.: ± 0.021 (-0.056...-0.014) - [0.0%] |
| | Opponent: | 49.11% (G:23.46% B:2.46%) | Duration: 1 minute 31 seconds |
| 7. | Rollout ¹ | 13/10 | eq: -0.043 (-0.170) |
| | Player: | 50.75% (G:18.18% B:0.76%) | Conf.: ± 0.015 (-0.058...-0.028) - [0.0%] |
| | Opponent: | 49.25% (G:22.36% B:2.10%) | Duration: 1 minute 28 seconds |

¹ 1296 Games rolled with Variance Reduction.

Moves and cube decisions: 3-ply

Problem 2



XGID=-b---E-D-b--B--bc-db-C-A-:1:1:1:52:0:0:7:5

● to play 52

○ is Player 2

score: 0
pip: 152

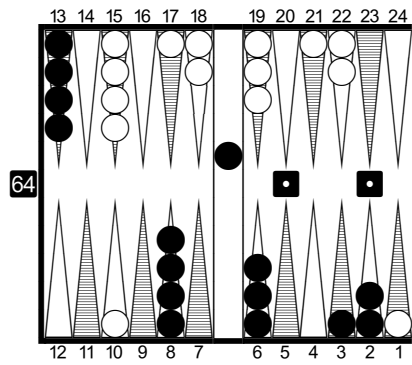
7 point match

pip: 178
score: 0

● is Player 1

| | | | |
|----|----------------------|---------------------------|---|
| 1. | Rollout ¹ | 8/3 6/4 | eq: -0.460 |
| | Player: | 33.01% (G:6.82% B:0.57%) | Conf.: ± 0.013 (-0.473...-0.448) - [100.0%] |
| | Opponent: | 66.99% (G:29.75% B:1.65%) | Duration: 5 minutes 49 seconds |
| 2. | Rollout ¹ | 6/4 6/1 | eq: -0.543 (-0.083) |
| | Player: | 29.43% (G:6.14% B:0.32%) | Conf.: ± 0.012 (-0.555...-0.531) - [0.0%] |
| | Opponent: | 70.57% (G:27.64% B:1.74%) | Duration: 5 minutes 18 seconds |
| 3. | Rollout ¹ | 8/1 | eq: -0.546 (-0.085) |
| | Player: | 27.62% (G:6.10% B:0.29%) | Conf.: ± 0.010 (-0.556...-0.536) - [0.0%] |
| | Opponent: | 72.38% (G:23.89% B:1.31%) | Duration: 4 minutes 37 seconds |
| 4. | Rollout ¹ | 8/6 8/3 | eq: -0.552 (-0.092) |
| | Player: | 29.10% (G:5.88% B:0.35%) | Conf.: ± 0.011 (-0.563...-0.541) - [0.0%] |
| | Opponent: | 70.90% (G:27.83% B:1.43%) | Duration: 5 minutes 12 seconds |
| 5. | Rollout ¹ | 13/8 6/4 | eq: -0.576 (-0.116) |
| | Player: | 29.68% (G:5.96% B:0.50%) | Conf.: ± 0.011 (-0.587...-0.564) - [0.0%] |
| | Opponent: | 70.32% (G:31.70% B:1.85%) | Duration: 5 minutes 16 seconds |
| 6. | Rollout ¹ | 13/11 13/8 | eq: -0.584 (-0.123) |
| | Player: | 27.53% (G:5.40% B:0.42%) | Conf.: ± 0.010 (-0.594...-0.574) - [0.0%] |
| | Opponent: | 72.47% (G:26.67% B:1.34%) | Duration: 4 minutes 57 seconds |
| 7. | Rollout ¹ | 24/22 8/3 | eq: -0.602 (-0.141) |
| | Player: | 27.28% (G:5.54% B:0.40%) | Conf.: ± 0.011 (-0.612...-0.591) - [0.0%] |
| | Opponent: | 72.72% (G:28.25% B:1.43%) | Duration: 5 minutes 07 seconds |
| 8. | Rollout ¹ | 13/6 | eq: -0.613 (-0.153) |
| | Player: | 27.03% (G:5.14% B:0.55%) | Conf.: ± 0.010 (-0.623...-0.603) - [0.0%] |
| | Opponent: | 72.97% (G:27.94% B:1.51%) | Duration: 4 minutes 45 seconds |
| 9. | Rollout ¹ | 24/22 6/1 | eq: -0.632 (-0.172) |
| | Player: | 25.05% (G:4.80% B:0.36%) | Conf.: ± 0.010 (-0.642...-0.623) - [0.0%] |
| | Opponent: | 74.95% (G:25.21% B:1.13%) | Duration: 4 minutes 35 seconds |

Problem 3



XGID=-aBA--C-D-a--D-d-abc-ab--A:0:0:1:11:2:1:0:5:10

● to play 11

○ is Player 2

score: 1
pip: 129

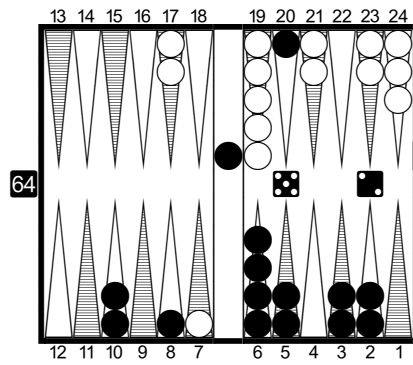
5 point match

pip: 134
score: 2

● is Player 1

| | | | |
|-----|----------------------|---------------------------|---|
| 1. | Rollout ¹ | Bar/23 2/1*(2) | eq: -0.557 |
| | Player: | 43.19% (G:14.92% B:1.27%) | Conf.: ± 0.021 (-0.578...-0.535) - [100.0%] |
| | Opponent: | 56.81% (G:21.26% B:1.22%) | Duration: 2 minutes 30 seconds |
| 2. | Rollout ¹ | Bar/24 13/10* | eq: -0.710 (-0.153) |
| | Player: | 41.89% (G:15.20% B:2.54%) | Conf.: ± 0.022 (-0.732...-0.687) - [0.0%] |
| | Opponent: | 58.11% (G:22.83% B:2.48%) | Duration: 2 minutes 49 seconds |
| 3. | Rollout ¹ | Bar/23 3/1* | eq: -0.735 (-0.178) |
| | Player: | 41.38% (G:14.37% B:1.21%) | Conf.: ± 0.023 (-0.758...-0.712) - [0.0%] |
| | Opponent: | 58.62% (G:22.81% B:1.34%) | Duration: 2 minutes 28 seconds |
| 4. | Rollout ¹ | Bar/24 6/3 | eq: -0.754 (-0.197) |
| | Player: | 40.08% (G:10.99% B:1.38%) | Conf.: ± 0.021 (-0.775...-0.733) - [0.0%] |
| | Opponent: | 59.92% (G:20.80% B:0.70%) | Duration: 2 minutes 08 seconds |
| 5. | Rollout ¹ | Bar/24 8/7(2) 3/2 | eq: -0.774 (-0.217) |
| | Player: | 39.13% (G:10.32% B:1.15%) | Conf.: ± 0.021 (-0.795...-0.754) - [0.0%] |
| | Opponent: | 60.87% (G:20.02% B:1.05%) | Duration: 2 minutes 16 seconds |
| 6. | Rollout ¹ | Bar/24 3/1* 2/1 | eq: -0.801 (-0.244) |
| | Player: | 39.33% (G:13.67% B:1.21%) | Conf.: ± 0.021 (-0.822...-0.780) - [0.0%] |
| | Opponent: | 60.67% (G:21.65% B:1.49%) | Duration: 2 minutes 27 seconds |
| 7. | Rollout ¹ | Bar/24 8/7 2/1*(2) | eq: -0.802 (-0.246) |
| | Player: | 39.71% (G:15.78% B:1.27%) | Conf.: ± 0.023 (-0.825...-0.779) - [0.0%] |
| | Opponent: | 60.29% (G:22.50% B:2.27%) | Duration: 2 minutes 54 seconds |
| 8. | Rollout ¹ | Bar/24 13/12 2/1*(2) | eq: -0.845 (-0.288) |
| | Player: | 39.47% (G:15.19% B:1.24%) | Conf.: ± 0.022 (-0.867...-0.822) - [0.0%] |
| | Opponent: | 60.53% (G:22.79% B:2.93%) | Duration: 2 minutes 54 seconds |
| 9. | Rollout ¹ | Bar/23 8/7(2) | eq: -0.904 (-0.347) |
| | Player: | 41.60% (G:13.29% B:1.90%) | Conf.: ± 0.023 (-0.927...-0.882) - [0.0%] |
| | Opponent: | 58.40% (G:26.24% B:1.83%) | Duration: 2 minutes 35 seconds |
| 10. | Rollout ¹ | Bar/24 8/7 3/1* | eq: -0.913 (-0.357) |
| | Player: | 38.80% (G:14.88% B:1.20%) | Conf.: ± 0.023 (-0.936...-0.891) - [0.0%] |
| | Opponent: | 61.20% (G:23.70% B:2.02%) | Duration: 3 minutes 00 second |

Problem 4



○ is Player 2

score: 4
pip: 79

5 point match
Crawford

pip: 117
score: 0

● is Player 1

XGID=-BB-BDaA-B-----b-eAb-bcA:0:0:1:52:0:4:1:5:10

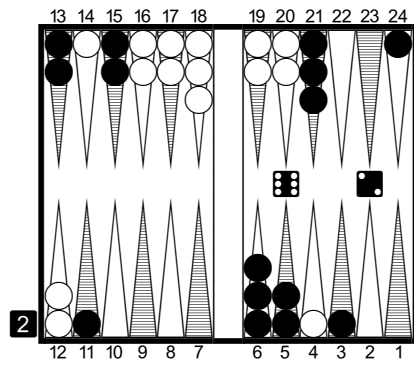
● to play 52

| | | | |
|----|----------------------|---------------------------|---|
| 1. | Rollout ¹ | Bar/18 | eq: -0.456 |
| | Player: | 27.01% (G:2.63% B:0.12%) | Conf.: ± 0.003 (-0.460...-0.453) - [100.0%] |
| | Opponent: | 72.99% (G:22.01% B:0.25%) | Duration: 1 minute 14 seconds |
| 2. | Rollout ¹ | Bar/20 8/6 | eq: -0.541 (-0.084) |
| | Player: | 22.90% (G:1.21% B:0.05%) | Conf.: ± 0.002 (-0.543...-0.538) - [0.0%] |
| | Opponent: | 77.10% (G:5.18% B:0.02%) | Duration: 1 minute 09 seconds |
| 3. | Rollout ¹ | Bar/20 6/4 | eq: -0.554 (-0.097) |
| | Player: | 22.22% (G:1.46% B:0.05%) | Conf.: ± 0.003 (-0.557...-0.551) - [0.0%] |
| | Opponent: | 77.78% (G:13.71% B:0.08%) | Duration: 1 minute 22 seconds |
| 4. | Rollout ¹ | Bar/20 10/8 | eq: -0.594 (-0.137) |
| | Player: | 20.24% (G:1.28% B:0.04%) | Conf.: ± 0.003 (-0.596...-0.591) - [0.0%] |
| | Opponent: | 79.76% (G:14.75% B:0.07%) | Duration: 1 minute 18 seconds |

¹ 1296 Games rolled with Variance Reduction.

Moves and cube decisions: 3-ply

Problem 5



XGID=---AaBC---AbBaBbbcbC--A-:1:1:1:62:1:2:0:5:10

● to play 62

○ is Player 2

score: 2
pip: 135

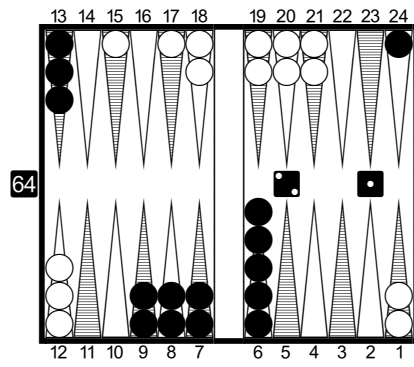
5 point match

pip: 185
score: 1

● is Player 1

| | | | |
|-----|----------------------|---------------------------|---|
| 1. | Rollout ¹ | 21/15 6/4* | eq: -0.073 |
| | Player: | 35.22% (G:6.69% B:0.70%) | Conf.: ± 0.016 (-0.088...-0.057) - [100.0%] |
| | Opponent: | 64.78% (G:30.80% B:3.96%) | Duration: 6 minutes 02 seconds |
| 2. | Rollout ¹ | 21/15 11/9 | eq: -0.194 (-0.122) |
| | Player: | 31.29% (G:5.60% B:0.42%) | Conf.: ± 0.013 (-0.208...-0.181) - [0.0%] |
| | Opponent: | 68.71% (G:25.63% B:3.69%) | Duration: 4 minutes 53 seconds |
| 3. | Rollout ¹ | 21/13 | eq: -0.208 (-0.136) |
| | Player: | 30.80% (G:5.44% B:0.53%) | Conf.: ± 0.013 (-0.221...-0.196) - [0.0%] |
| | Opponent: | 69.20% (G:26.00% B:2.66%) | Duration: 5 minutes 07 seconds |
| 4. | Rollout ¹ | 13/7 6/4* | eq: -0.216 (-0.144) |
| | Player: | 32.41% (G:5.44% B:0.48%) | Conf.: ± 0.021 (-0.237...-0.196) - [0.0%] |
| | Opponent: | 67.59% (G:37.74% B:6.78%) | Duration: 6 minutes 46 seconds |
| 5. | Rollout ¹ | 11/5 6/4* | eq: -0.239 (-0.166) |
| | Player: | 31.10% (G:5.28% B:0.56%) | Conf.: ± 0.016 (-0.255...-0.222) - [0.0%] |
| | Opponent: | 68.90% (G:32.09% B:4.54%) | Duration: 6 minutes 17 seconds |
| 6. | Rollout ¹ | 21/15 5/3 | eq: -0.243 (-0.170) |
| | Player: | 30.28% (G:5.06% B:0.50%) | Conf.: ± 0.013 (-0.256...-0.230) - [0.0%] |
| | Opponent: | 69.72% (G:28.16% B:3.26%) | Duration: 4 minutes 54 seconds |
| 7. | Rollout ¹ | 21/15 13/11 | eq: -0.243 (-0.171) |
| | Player: | 30.22% (G:4.98% B:0.45%) | Conf.: ± 0.013 (-0.256...-0.230) - [0.0%] |
| | Opponent: | 69.78% (G:28.22% B:2.85%) | Duration: 4 minutes 57 seconds |
| 8. | Rollout ¹ | 15/9 6/4* | eq: -0.265 (-0.192) |
| | Player: | 31.23% (G:4.98% B:0.61%) | Conf.: ± 0.020 (-0.284...-0.245) - [0.0%] |
| | Opponent: | 68.77% (G:39.36% B:8.04%) | Duration: 6 minutes 43 seconds |
| 9. | Rollout ¹ | 24/22 21/15 | eq: -0.276 (-0.203) |
| | Player: | 29.27% (G:4.80% B:0.41%) | Conf.: ± 0.013 (-0.288...-0.263) - [0.0%] |
| | Opponent: | 70.73% (G:27.17% B:2.47%) | Duration: 5 minutes 34 seconds |
| 10. | Rollout ¹ | 11/3 | eq: -0.319 (-0.246) |
| | Player: | 27.97% (G:5.30% B:0.44%) | Conf.: ± 0.012 (-0.331...-0.306) - [0.0%] |
| | Opponent: | 72.03% (G:24.79% B:2.89%) | Duration: 5 minutes 02 seconds |

Problem 6



XGID=b----EBBB--cC-a-abbbb--A-:0:0:1:21:4:0:1:5:10

● to play 21

○ is Player 2

score: 0
pip: 149

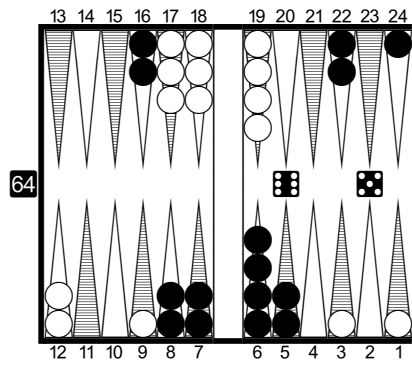
5 point match
Crawford

pip: 141
score: 4

● is Player 1

| | | | |
|-----|----------------------|---------------------------|---|
| 1. | Rollout ¹ | 24/22 6/5 | eq: -0.112 |
| | Player: | 45.62% (G:13.14% B:1.54%) | Conf.: ± 0.006 (-0.118...-0.106) - [100.0%] |
| | Opponent: | 54.38% (G:20.20% B:0.74%) | Duration: 3 minutes 58 seconds |
| 2. | Rollout ¹ | 24/22 9/8 | eq: -0.184 (-0.072) |
| | Player: | 42.10% (G:13.16% B:1.78%) | Conf.: ± 0.005 (-0.189...-0.179) - [0.0%] |
| | Opponent: | 57.90% (G:21.98% B:0.74%) | Duration: 3 minutes 48 seconds |
| 3. | Rollout ¹ | 24/23 13/11 | eq: -0.202 (-0.090) |
| | Player: | 41.18% (G:14.03% B:1.92%) | Conf.: ± 0.006 (-0.207...-0.196) - [0.0%] |
| | Opponent: | 58.82% (G:20.15% B:0.82%) | Duration: 3 minutes 43 seconds |
| 4. | Rollout ¹ | 13/11 6/5 | eq: -0.203 (-0.091) |
| | Player: | 41.48% (G:13.06% B:1.47%) | Conf.: ± 0.006 (-0.210...-0.197) - [0.0%] |
| | Opponent: | 58.52% (G:23.06% B:1.31%) | Duration: 3 minutes 49 seconds |
| 5. | Rollout ¹ | 7/5 6/5 | eq: -0.214 (-0.102) |
| | Player: | 40.73% (G:15.64% B:2.17%) | Conf.: ± 0.006 (-0.220...-0.208) - [0.0%] |
| | Opponent: | 59.27% (G:20.30% B:1.14%) | Duration: 3 minutes 40 seconds |
| 6. | Rollout ¹ | 24/22 8/7 | eq: -0.215 (-0.103) |
| | Player: | 40.67% (G:13.25% B:1.76%) | Conf.: ± 0.006 (-0.221...-0.209) - [0.0%] |
| | Opponent: | 59.33% (G:23.20% B:0.91%) | Duration: 3 minutes 50 seconds |
| 7. | Rollout ¹ | 13/10 | eq: -0.227 (-0.115) |
| | Player: | 40.03% (G:13.87% B:1.38%) | Conf.: ± 0.006 (-0.233...-0.221) - [0.0%] |
| | Opponent: | 59.97% (G:19.78% B:1.05%) | Duration: 3 minutes 33 seconds |
| 8. | Rollout ¹ | 24/23 6/4 | eq: -0.228 (-0.116) |
| | Player: | 40.00% (G:11.61% B:1.78%) | Conf.: ± 0.006 (-0.234...-0.222) - [0.0%] |
| | Opponent: | 60.00% (G:23.20% B:0.86%) | Duration: 3 minutes 50 seconds |
| 9. | Rollout ¹ | 24/23 9/7 | eq: -0.262 (-0.150) |
| | Player: | 38.15% (G:12.24% B:1.52%) | Conf.: ± 0.005 (-0.268...-0.257) - [0.0%] |
| | Opponent: | 61.85% (G:20.79% B:0.77%) | Duration: 4 minutes 04 seconds |
| 10. | Rollout ¹ | 6/3 | eq: -0.262 (-0.150) |
| | Player: | 38.31% (G:12.80% B:1.57%) | Conf.: ± 0.006 (-0.268...-0.256) - [0.0%] |
| | Opponent: | 61.69% (G:21.87% B:1.01%) | Duration: 3 minutes 50 seconds |

Problem 7



○ is Player 2

score: 0
pip: 157

3 point match

pip: 164
score: 0

● is Player 1

XGID=-a-a-BDBBa-b---Bccd--B-A-:0:0:1:65:0:0:0:3:10

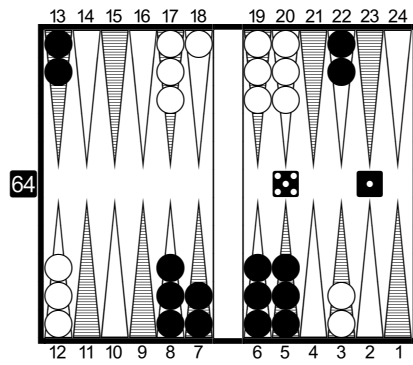
● to play 65

| | | | |
|----|----------------------|---------------------------|---|
| 1. | Rollout ¹ | 22/11 | eq: +0.238 |
| | Player: | 54.48% (G:17.92% B:1.91%) | Conf.: ± 0.019 (+0.219...+0.257) - [100.0%] |
| | Opponent: | 45.52% (G:13.30% B:1.57%) | Duration: 3 minutes 54 seconds |
| 2. | Rollout ¹ | 22/16 6/1* | eq: +0.116 (-0.122) |
| | Player: | 51.33% (G:17.64% B:1.32%) | Conf.: ± 0.018 (+0.098...+0.134) - [0.0%] |
| | Opponent: | 48.67% (G:13.55% B:1.54%) | Duration: 4 minutes 07 seconds |
| 3. | Rollout ¹ | 16/5 | eq: +0.047 (-0.191) |
| | Player: | 49.87% (G:17.99% B:1.95%) | Conf.: ± 0.020 (+0.027...+0.067) - [0.0%] |
| | Opponent: | 50.13% (G:14.01% B:1.62%) | Duration: 3 minutes 26 seconds |
| 4. | Rollout ¹ | 16/11 16/10 | eq: +0.024 (-0.214) |
| | Player: | 49.98% (G:16.12% B:1.28%) | Conf.: ± 0.018 (+0.006...+0.041) - [0.0%] |
| | Opponent: | 50.02% (G:14.48% B:1.70%) | Duration: 3 minutes 35 seconds |
| 5. | Rollout ¹ | 22/16 8/3* | eq: -0.006 (-0.244) |
| | Player: | 49.28% (G:17.78% B:2.39%) | Conf.: ± 0.020 (-0.027...+0.014) - [0.0%] |
| | Opponent: | 50.72% (G:16.18% B:2.05%) | Duration: 4 minutes 26 seconds |
| 6. | Rollout ¹ | 7/1* 6/1 | eq: -0.014 (-0.251) |
| | Player: | 47.39% (G:19.70% B:1.05%) | Conf.: ± 0.018 (-0.032...+0.005) - [0.0%] |
| | Opponent: | 52.61% (G:13.70% B:1.37%) | Duration: 3 minutes 32 seconds |
| 7. | Rollout ¹ | 16/10 6/1* | eq: -0.077 (-0.315) |
| | Player: | 47.36% (G:17.54% B:1.37%) | Conf.: ± 0.022 (-0.099...-0.055) - [0.0%] |
| | Opponent: | 52.64% (G:17.08% B:1.83%) | Duration: 3 minutes 41 seconds |
| 8. | Rollout ¹ | 8/3* 7/1* | eq: -0.161 (-0.399) |
| | Player: | 45.49% (G:18.84% B:1.12%) | Conf.: ± 0.020 (-0.182...-0.141) - [0.0%] |
| | Opponent: | 54.51% (G:17.62% B:2.23%) | Duration: 3 minutes 54 seconds |

¹ 1296 Games rolled with Variance Reduction.

Moves and cube decisions: 3-ply

Problem 8



○ is Player 2

score: 4
pip: 147

7 point match

pip: 141
score: 4

● is Player 1

XGID=---b-CCBC---cB---cacc-B---:0:0:1:51:4:4:0:7:10

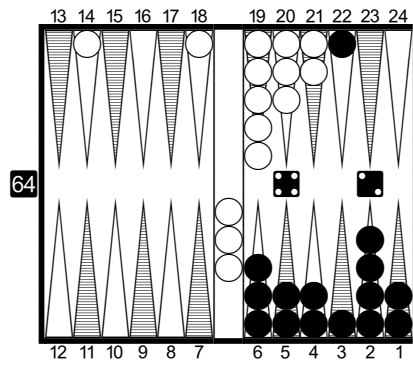
● to play 51

| | | | |
|----|----------------------|---------------------------|---|
| 1. | Rollout ¹ | 22/16 | eq: +0.042 |
| | Player: | 52.25% (G:12.67% B:0.85%) | Conf.: ± 0.015 (+0.027...+0.058) - [100.0%] |
| | Opponent: | 47.75% (G:15.98% B:1.04%) | Duration: 2 minutes 24 seconds |
| 2. | Rollout ¹ | 13/7 | eq: -0.052 (-0.094) |
| | Player: | 49.08% (G:11.43% B:0.60%) | Conf.: ± 0.017 (-0.069...-0.035) - [0.0%] |
| | Opponent: | 50.92% (G:11.55% B:1.08%) | Duration: 2 minutes 21 seconds |
| 3. | Rollout ¹ | 13/8 5/4 | eq: -0.079 (-0.121) |
| | Player: | 48.58% (G:12.04% B:0.86%) | Conf.: ± 0.016 (-0.095...-0.063) - [0.0%] |
| | Opponent: | 51.42% (G:12.92% B:1.11%) | Duration: 2 minutes 12 seconds |
| 4. | Rollout ¹ | 8/2 | eq: -0.091 (-0.133) |
| | Player: | 48.46% (G:11.83% B:0.48%) | Conf.: ± 0.016 (-0.107...-0.076) - [0.0%] |
| | Opponent: | 51.54% (G:13.01% B:0.92%) | Duration: 2 minutes 06 seconds |
| 5. | Rollout ¹ | 8/7 6/1 | eq: -0.141 (-0.183) |
| | Player: | 46.98% (G:11.69% B:0.75%) | Conf.: ± 0.015 (-0.156...-0.126) - [0.0%] |
| | Opponent: | 53.02% (G:13.16% B:0.71%) | Duration: 2 minutes 09 seconds |

¹ 1296 Games rolled with Variance Reduction.

Moves and cube decisions: 3-ply

Problem 9



○ is Player 2

score: 1
pip: 146

5 point match

pip: 71
score: 3

● is Player 1

XGID=cBDABBC-----a---aecbA---:0:0:1:42:3:1:0:5:10

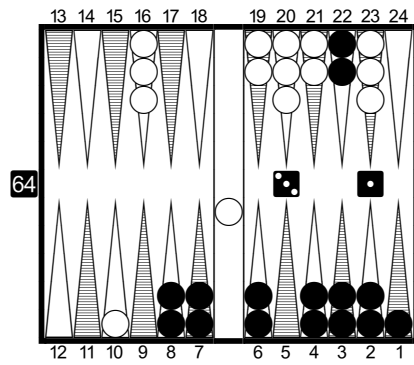
● to play 42

| | | | |
|----|----------------------|----------------------------|---|
| 1. | Rollout ¹ | 22/18* 5/3 | eq: +2.332 |
| | Player: | 93.92% (G:86.68% B:11.88%) | Conf.: ± 0.009 (+2.323...+2.341) - [100.0%] |
| | Opponent: | 6.08% (G:0.49% B:0.02%) | Duration: 30.2 seconds |
| 2. | Rollout ¹ | 22/18* 6/4 | eq: +2.251 (-0.081) |
| | Player: | 92.28% (G:84.98% B:15.92%) | Conf.: ± 0.010 (+2.241...+2.261) - [0.0%] |
| | Opponent: | 7.72% (G:0.62% B:0.03%) | Duration: 32.6 seconds |
| 3. | Rollout ¹ | 22/18* 3/1 | eq: +2.226 (-0.106) |
| | Player: | 91.21% (G:84.17% B:17.22%) | Conf.: ± 0.010 (+2.216...+2.236) - [0.0%] |
| | Opponent: | 8.79% (G:0.26% B:0.04%) | Duration: 39.0 seconds |
| 4. | Rollout ¹ | 22/18* 18/16 | eq: +2.207 (-0.125) |
| | Player: | 91.27% (G:83.63% B:15.19%) | Conf.: ± 0.010 (+2.197...+2.217) - [0.0%] |
| | Opponent: | 8.73% (G:0.73% B:0.08%) | Duration: 35.3 seconds |
| 5. | Rollout ¹ | 5/3 5/1 | eq: +2.166 (-0.166) |
| | Player: | 92.59% (G:78.48% B:6.66%) | Conf.: ± 0.009 (+2.157...+2.175) - [0.0%] |
| | Opponent: | 7.41% (G:0.44% B:0.02%) | Duration: 29.0 seconds |

¹ 1296 Games rolled with Variance Reduction.

Moves and cube decisions: 3-ply

Problem 10



XGID=aABBB-BBB-a-----c--bcbBc--:0:0:1:31:2:0:0:7:10

● to play 31

○ is Player 2

score: 0
pip: 108

7 point match

pip: 105
score: 2

● is Player 1

| | | | |
|-----|----------------------|---------------------------|---|
| 1. | Rollout ¹ | 8/5 6/5 | eq: -0.034 |
| | Player: | 46.48% (G:17.69% B:0.28%) | Conf.: ± 0.011 (-0.045...-0.023) - [100.0%] |
| | Opponent: | 53.52% (G:16.78% B:0.72%) | Duration: 46.2 seconds |
| 2. | Rollout ¹ | 8/7 8/5 | eq: -0.158 (-0.124) |
| | Player: | 44.98% (G:15.56% B:0.24%) | Conf.: ± 0.011 (-0.169...-0.147) - [0.0%] |
| | Opponent: | 55.02% (G:14.10% B:0.40%) | Duration: 50.2 seconds |
| 3. | Rollout ¹ | 8/4 | eq: -0.228 (-0.194) |
| | Player: | 44.84% (G:13.61% B:0.19%) | Conf.: ± 0.010 (-0.238...-0.218) - [0.0%] |
| | Opponent: | 55.16% (G:11.38% B:0.44%) | Duration: 53.6 seconds |
| 4. | Rollout ¹ | 8/5 7/6 | eq: -0.260 (-0.225) |
| | Player: | 45.61% (G:19.89% B:0.31%) | Conf.: ± 0.013 (-0.273...-0.246) - [0.0%] |
| | Opponent: | 54.39% (G:25.29% B:1.33%) | Duration: 1 minute 18 seconds |
| 5. | Rollout ¹ | 7/6 7/4 | eq: -0.292 (-0.258) |
| | Player: | 43.08% (G:13.16% B:0.21%) | Conf.: ± 0.009 (-0.301...-0.283) - [0.0%] |
| | Opponent: | 56.92% (G:10.64% B:0.40%) | Duration: 38.3 seconds |
| 6. | Rollout ¹ | 7/6 4/1 | eq: -0.304 (-0.269) |
| | Player: | 42.31% (G:14.71% B:0.20%) | Conf.: ± 0.008 (-0.311...-0.296) - [0.0%] |
| | Opponent: | 57.69% (G:15.63% B:0.60%) | Duration: 45.4 seconds |
| 7. | Rollout ¹ | 7/4 2/1 | eq: -0.306 (-0.271) |
| | Player: | 43.10% (G:13.65% B:0.19%) | Conf.: ± 0.009 (-0.315...-0.296) - [0.0%] |
| | Opponent: | 56.90% (G:14.72% B:0.60%) | Duration: 46.1 seconds |
| 8. | Rollout ¹ | 4/3 4/1 | eq: -0.339 (-0.304) |
| | Player: | 42.62% (G:10.67% B:0.14%) | Conf.: ± 0.010 (-0.349...-0.328) - [0.0%] |
| | Opponent: | 57.38% (G:11.42% B:0.52%) | Duration: 44.1 seconds |
| 9. | Rollout ¹ | 7/3 | eq: -0.341 (-0.307) |
| | Player: | 41.66% (G:12.92% B:0.19%) | Conf.: ± 0.008 (-0.349...-0.333) - [0.0%] |
| | Opponent: | 58.34% (G:15.23% B:0.59%) | Duration: 43.7 seconds |
| 10. | Rollout ¹ | 8/7 4/1 | eq: -0.404 (-0.370) |
| | Player: | 39.23% (G:12.22% B:0.14%) | Conf.: ± 0.012 (-0.416...-0.392) - [0.0%] |
| | Opponent: | 60.77% (G:14.43% B:0.57%) | Duration: 1 minute 00 second |

| | | | |
|-----|----------------------|---------------------------|---|
| 11. | Rollout ¹ | 8/5 2/1 | eq: -0.410 (-0.376) |
| | Player: | 41.58% (G:16.78% B:0.23%) | Conf.: ± 0.013 (-0.423...-0.397) - [0.0%] |
| | Opponent: | 58.42% (G:22.14% B:0.94%) | Duration: 1 minute 07 seconds |

¹ 1296 Games rolled with Variance Reduction.

Moves and cube decisions: 3-ply

www.eXtremeGammon.com Version: 2.10, MET: Kazaross XG2